

# RGB WALL MOUNT CONTROLLER

- Full color capacitive touch panel controller
- 3 channels / 4 amps per channel
- Power: 144W Max at 12V, 288W Max at 24V
- IP30 rated
- Operating voltage: 12-24Vdc
- Operating Temp: -20 to 60°C
- Low Side Switched



## SPECIFICATIONS

PART NUMBER	CHANNELS	VOLTAGE (VDC)	CURRENT PER CHANNEL (A) MAX	WATTAGE PER CHANNEL (W MAX)
480628	Red	12 - 24	4	96
480628	Green	12 - 24	4	96
480628	Blue	12 - 24	4	96

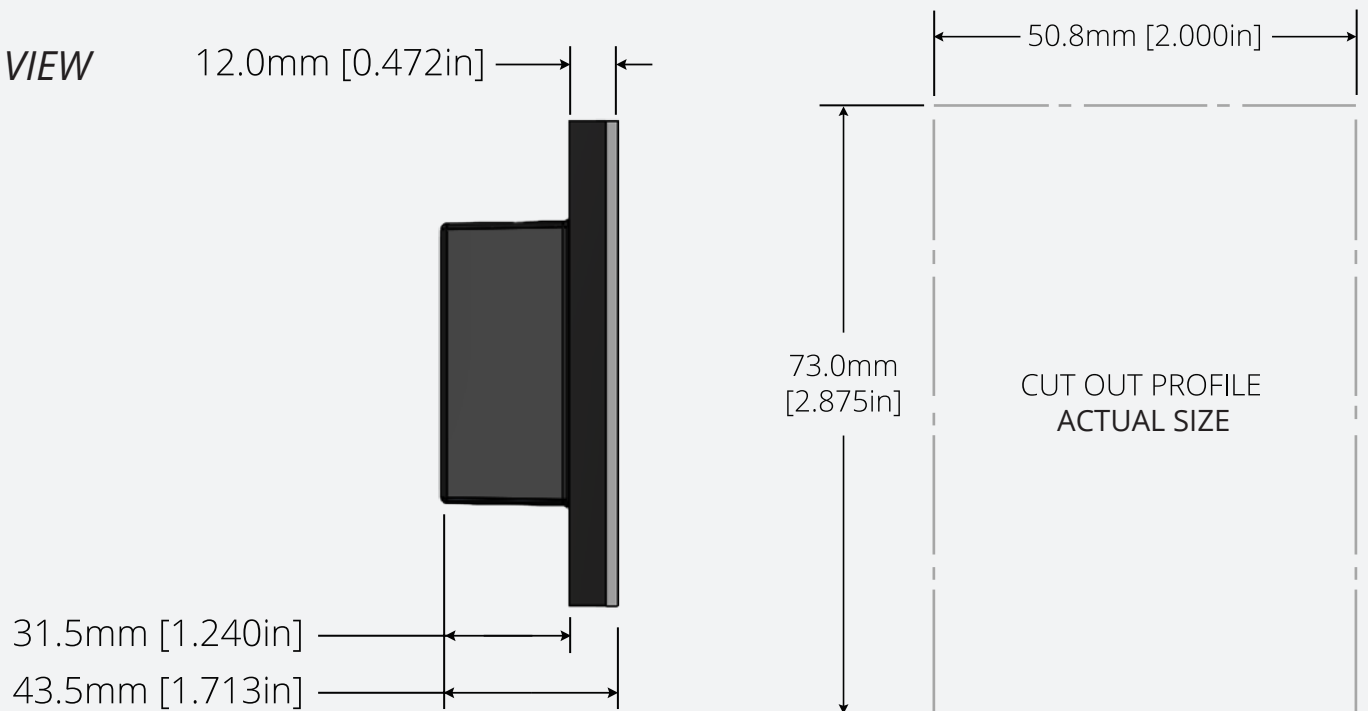
Vista reserves the right to modify this specification without prior notice.

# DIMENSIONS

## FRONT VIEW



## SIDE VIEW



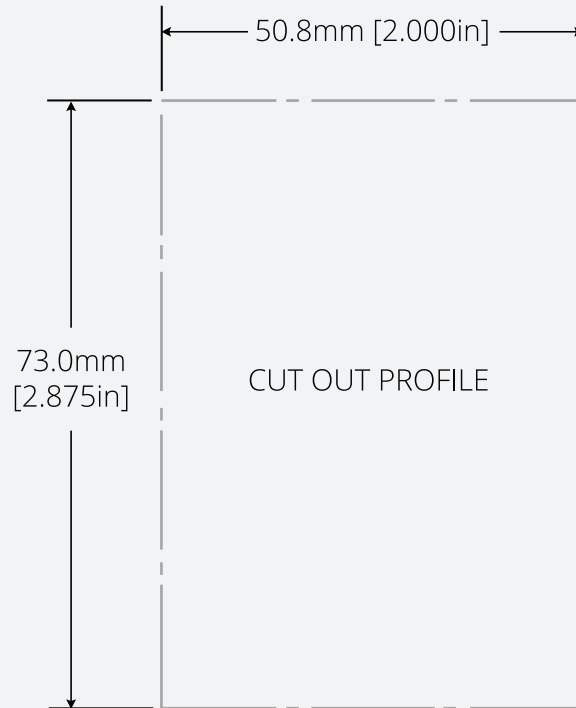
Vista reserves the right to modify this specification without prior notice.

---

# INSTALLATION INSTRUCTIONS

**FASTENING:** Keep the following in mind:

- Verify the location for the product to be installed.
- Plan how the necessary wiring will need to be routed.
- Cut a hole in the mounting location with the following dimensions:



**WIRING:** RGB Wall Mount Controller – The wall mount controller has both input and output terminal connections. Refer to the following polarity information when routing and connecting wires.

- Input Terminals: 2 – (1 Power / 1 Ground)
  - oV+ (Power)
  - oV- (Ground)
- Output Terminals: 4 – (1 Power / 3 Ground)
  - oV+ (Power)
  - oR (Red Ground)
  - oG (Green Ground)
  - oB (Blue Ground)

---

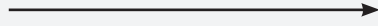
*Vista reserves the right to modify this specification without prior notice.*

---

Vista Standard RGB Lighting Wire Colors – Due to product variation, the wire colors for some Vista RGB lights may vary depending on the product. Refer to the following wire polarity information for Vista RGB Lighting.

**RGB Wall Mount Controller – Output Terminals**

V+ (Power)  
 B (Blue Ground)  
 G (Green Ground)  
 R (Red Ground)



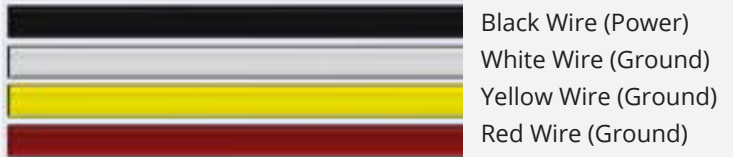
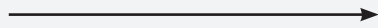
**Vista RGB Lighting (possible wire colors)**



V+ (Power)  
 B (Blue Ground)  
 G (Green Ground)  
 R (Red Ground)

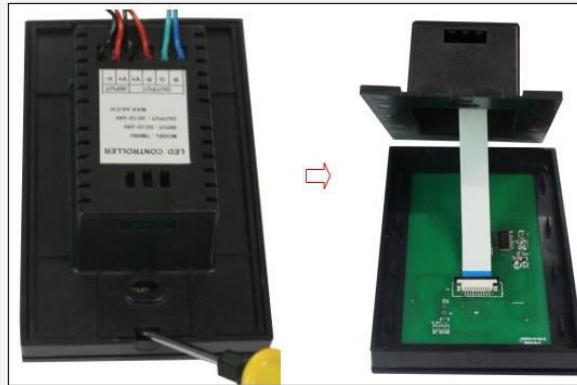


V+ (Power)  
 B (Blue Ground)  
 G (Green Ground)  
 R (Red Ground)

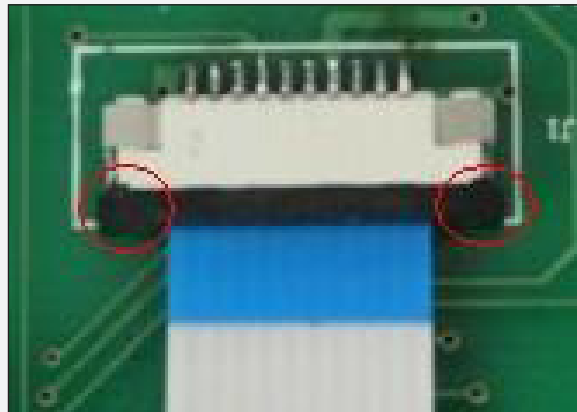


**FASTENING:**

**Step 1:** Remove the front cover: Using a flathead screwdriver, remove the front cover by prying gently in the small gap shown below and separate the front cover from the base.

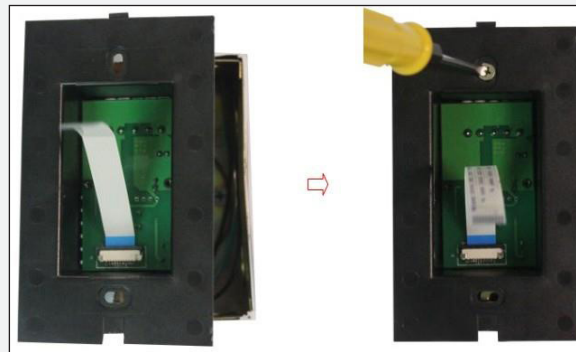


**Step 2:** Remove the ribbon cable: Press inward on the clips circled in red below and remove the ribbon cable.



*Vista reserves the right to modify this specification without prior notice.*

**Step 3:** Mount controller base to wall: Insert the controller housing into the mounting hole and screw it into place using the two screw locations shown below:



**NOTE:** Ensure that the base is properly oriented. The tab circled in red above indicates the top side of the controller.

**Step 4:** Mount the front cover: Re-install the ribbon cable and snap the front cover into place.



**DISCONNECT POWER SOURCE (BATTERY) BEFORE STARTING ELECTRICAL WORK.**

Recommended methods for splicing wires together (*parts not included in Vista product kits*):

- Solder and cover bare wires with heat shrink or electrical tape.
- Insulation-displacement connector (IDC) / insulation-piercing contact (IPC).
- Twist on wire connector, “wire nut”.
- Crimp connector, “Butt splice”.

**WARNING:**

1. Supply current and wattage must not exceed the rated values on the specification documents.
2. Incorrect polarity or improper wiring may cause personal injury and/or damage to the product. It is recommended that an electrical technician, professional, or similarly qualified individual finish wiring.
3. To avoid electrical shock risk, all failures should be examined by a qualified technician.
4. Environmental suitability, including but not limited to water resistance, varies based on product design. Unless explicitly noted, products are to be installed in a location shielded from outdoor elements. To avoid irreparable damage, refer to specification sheets to locate products in a proper environment.
5. Do not install products near an open flame or in high temperature environments unless the product is explicitly designed to function as such. Adversely, do not install products in excessively cold environments unless explicitly designed to function as such. Refer to product spec sheets/drawings for information about minimum and maximum operating temperatures.
6. Vista Manufacturing Inc. is not liable for any injuries or damage caused due to improper wiring or installation.

————— *Vista reserves the right to modify this specification without prior notice.* —————