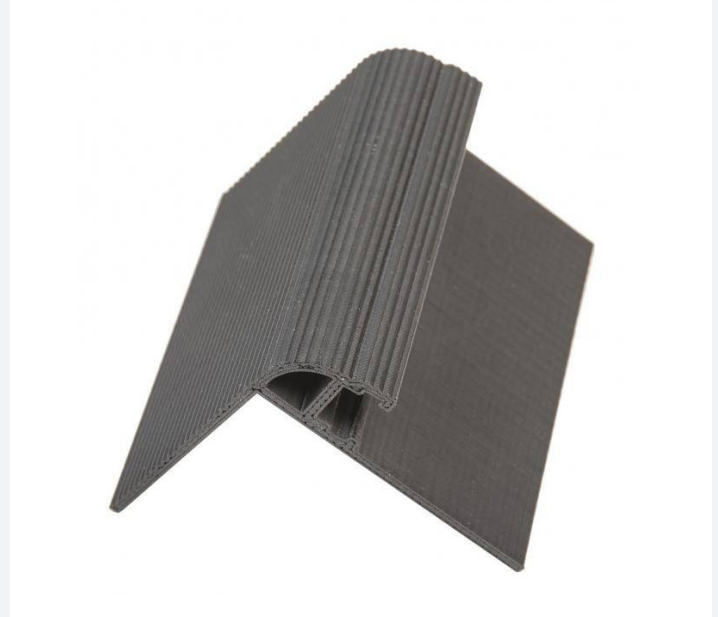
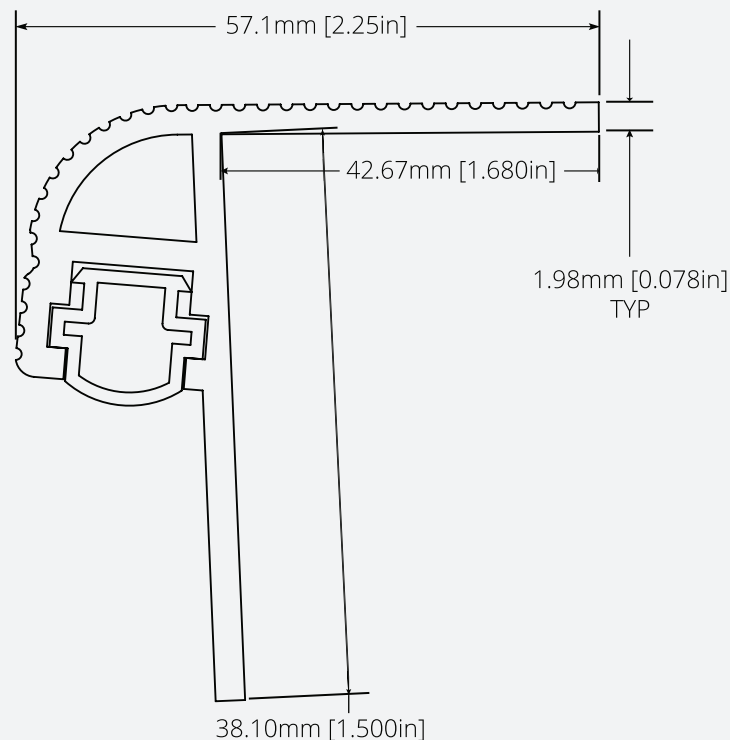


SAFE STEP

- Designed to illuminate stair risers
- Recess will accommodate Vista's FKL Tube for various lighting options
- Rugged, heavy-duty, channel that is ideal for many stair applications
- Easy to install
- Available in Black or White PVC



DIMENSIONS *EXTRUSION*



INSTALLATION INSTRUCTIONS

PREPARATION: Keep the following in mind:

- Make sure that the mounting surface is clear of debris.

INSTALLATION: It is recommended that all assembly pieces are readily available prior to assembly.

- **Extruded Light Installation**

1. Take the light tube and slide it into the mating channel on the mounting extrusion.
2. After the step is installed, refer to the wiring instructions at the bottom of this page.

- **Mounting Extrusion Installation**

1. If required, drill mounting holes into the mounting extrusion approximately every 9in along surface 1.
2. Place the mounting extrusion on the edge of the step with surface 1 at the top of the step and surface 2 pressed securely into the step.
3. Secure the mounting extrusion to the step with appropriate fasteners (**NOTE: mounting hardware not included due to varying applications**).

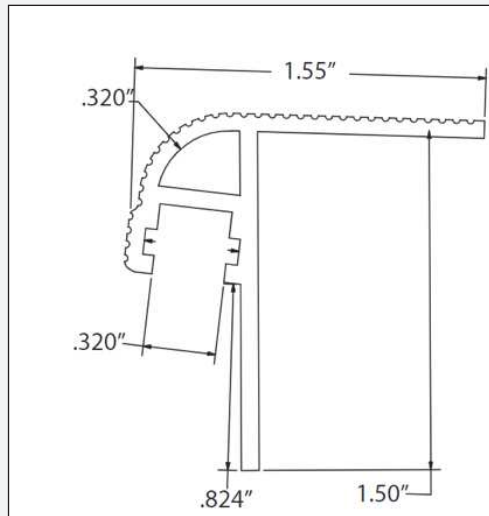
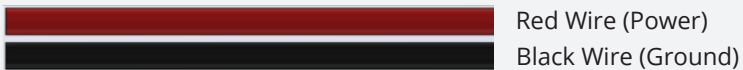


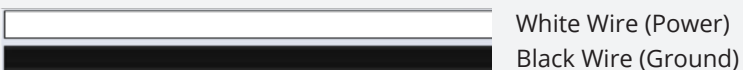
Figure 1: Safe Step Mounting Extrusion

WIRING: Determine the wiring configuration used on the product:

- 2 Wire Version (1 Power / 1 Ground)



- 2 Wire Version (1 Power / 1 Ground)



Vista reserves the right to modify this specification without prior notice.

- 3 Wire Version (1 Power / 2 Ground)



Red Wire (Power)
Green Wire (Ground, color output)
Black Wire (Ground, white output)

DISCONNECT POWER SOURCE (BATTERY) BEFORE STARTING ELECTRICAL WORK.

Recommended methods for splicing wires together (*parts not included in Vista product kits*):

- Solder and cover bare wires with heat shrink or electrical tape.
- Insulation-displacement connector (IDC) / insulation-piercing contact (IPC).
- Twist on wire connector, “wire nut”.
- Crimp connector, “Butt splice”.

WARNING:

1. Supply current and wattage must not exceed the rated values on the specification documents.
2. Incorrect polarity or improper wiring may cause personal injury and/or damage to the product. It is recommended that an electrical technician, professional, or similarly qualified individual finish wiring.
3. To avoid electrical shock risk, all failures should be examined by a qualified technician.
4. Environmental suitability, including but not limited to water resistance, varies based on product design. Unless explicitly noted, products are to be installed in a location shielded from outdoor elements. To avoid irreparable damage, refer to specification sheets to locate products in a proper environment.
5. Do not install products near an open flame or in high temperature environments unless the product is explicitly designed to function as such. Adversely, do not install products in excessively cold environments unless explicitly designed to function as such. Refer to product spec sheets/drawings for information about minimum and maximum operating temperatures.
6. Vista Manufacturing Inc. is not liable for any injuries or damage caused due to improper wiring or installation.

Vista reserves the right to modify this specification without prior notice.
